

- NOTES:**
- ALL DIMENSIONS ARE IN MILLIMETRES AND LEVELS ARE IN METER, UNLESS OTHERWISE SPECIFIED.
  - DIMENSIONS ARE NOT TO BE SCALED. ONLY WRITTEN DIMENSIONS SHALL BE FOLLOWED.
  - THIS DRAWING SHOULD BE READ IN CONJUNCTION WITH GENERAL ARRANGEMENT DRAWINGS AND RAIL ALIGNMENT DRAWINGS.
  - SEISMIC ZONE: II
  - IF ANY AMBIGUITY IS FOUND IN DRAWINGS OR AT SITE, THE SAME SHALL BE BROUGHT TO DESIGNER'S/ENGINEER'S NOTICE BEFORE EXECUTION.
  - REINFORCEMENT STEEL SHALL BE HYSD BARS OF GRADE Fe 500 CONFORMING TO IS:1786-2008.
  - GRADE OF CONCRETE SHALL BE AS FOLLOWS:  
LEVELING COURSE : PCC M20  
PILE CAP : RCC M35  
PIER : RCC M50
  - CLEAR COVER TO ALL REINFORCEMENT SHALL BE:  
PILE CAP : 75mm  
PIER : 50mm
  - THE NOMINAL MAXIMUM SIZE OF AGGREGATE TO BE USED SHALL BE 20mm.
  - DEVELOPMENT LENGTH SHALL BE AS GIVEN BELOW :

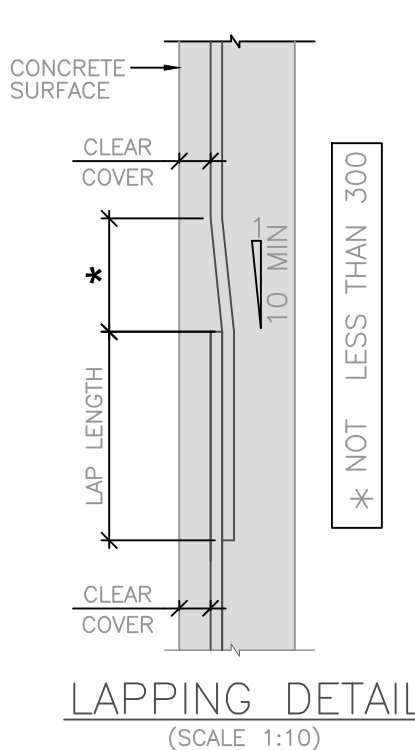
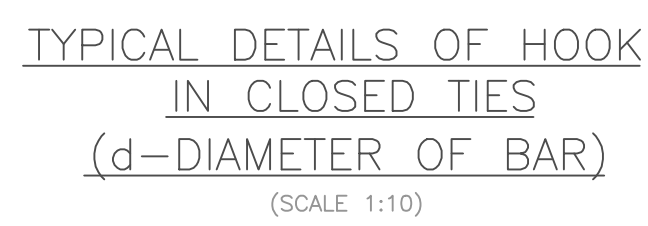
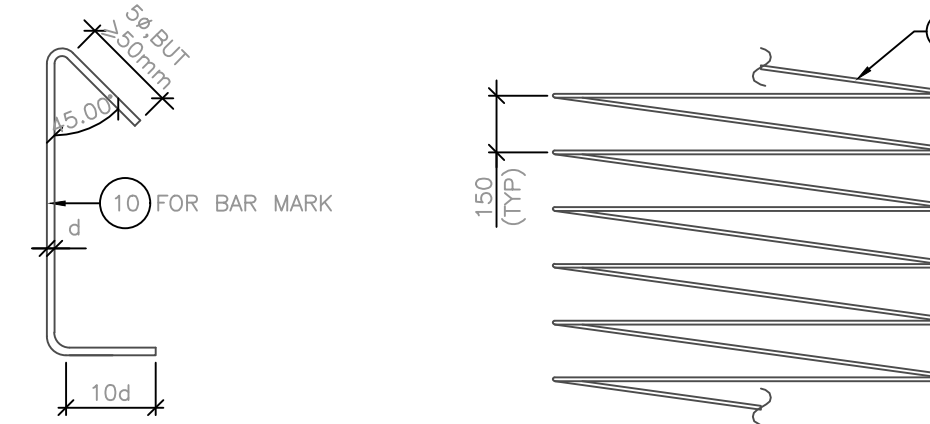
GRADE OF CONCRETE	M35	M50
DEVELOPMENT LENGTH	46 $\phi$	41 $\phi$

WHERE  $\phi$  IS THE DIA. OF BAR.
  - FOR PIER PROTECTION DIMENSION AND REINFORCEMENT DETAIL REFER SEPARATE DRAWING.
  - NOISE BARRIER LOAD NOT CONSIDERED IN DESIGN.
  - FOR PORTAL BEAM AND BEARING DETAILS REFER SEPARATE DRAWING.

- LEGENDS:**
- TOP REINFORCEMENT
  - BOTTOM REINFORCEMENT
  - Ld DEVELOPMENT LENGTH

#### SCHEDULE OF REINFORCEMENT

PILE CAP	5	$\phi 32$	1300	$\phi 140$ c/c	BOTTOM BAR
	6	$\phi 32$	1300	$\phi 120$ c/c	BOTTOM BAR
	7	$\phi 25$	1300	$\phi 120$ c/c	TOP BAR
	8	$\phi 25$	1300	$\phi 140$ c/c	TOP BAR
PIER AT GROUND LEVEL	9	$\phi 12$		$\phi 140$ c/c	SIDE FACE BAR
	10	$\phi 12$		$\phi 140$ c/c	LONGITUDINAL DIRECTION
	11	$\phi 12$		$\phi 120$ c/c	TRANSVERSE DIRECTION
	12	$\phi 32$	300	4 Nos.	
	13	$\phi 32$	300	2x20 Nos.	
	14	$\phi 32$	300	2x20 Nos.	
PIER AT LEVEL 1	15	$\phi 12$		$\phi 200$ c/c	6 LEGGED
	16	$\phi 12$		$\phi 200$ c/c	6 LEGGED
	17	$\phi 12$		$\phi 200$ c/c	2 LEGGED
	18	$\phi 12$		$\phi 200$ c/c	2 LEGGED
	19	$\phi 16$		3 Nos.	2 LEGGED
	20	$\phi 32$	500	17x2=34 NOS.	EQUALLY SPACED
PIER AT LEVEL 2	21	$\phi 32$	500	14x2=28 NOS.	EQUALLY SPACED
	22	$\phi 12$		8 LEGGED $\phi 200$ c/c	STIRRUP
	23	$\phi 12$		6 LEGGED $\phi 200$ c/c	STIRRUP
	24	$\phi 20$		31 NOS.	EQUALLY SPACED



NOTES:	NOTES:	LEGEND:	REFERENCE DRAWINGS:	REFERENCE DOCUMENTS:	KEY PLAN	STATION BOX KEY PLAN	EMPLOYER:																		
			1. 022077-BSRP-CR2-C-VD-GEN-20-4507...DIMENSION DETAILS OF FOUNDATION, SUBSTRUCTURE AND, PILE REINFORCEMENT FOR DOUBLE DECKER PIER AT P132 TO P137	022077-BSRP-CR2-C-VD-GEN-20-4508 (REV-A)			<table><thead><tr><th>DESIGNATION</th><th>NAME</th><th>SIGN</th></tr></thead><tbody><tr><td></td><td></td><td></td></tr><tr><td></td><td></td><td></td></tr><tr><td></td><td></td><td></td></tr><tr><td></td><td></td><td></td></tr><tr><td></td><td></td><td></td></tr></tbody></table>	DESIGNATION	NAME	SIGN															
DESIGNATION	NAME	SIGN																							
REVISIONS	CONTRACTOR:	QUALITY ASSURANCE	GENERAL CONSULTANTS	EMPLOYER:	PROJECT:																				
	TRANSPORTATION INFRASTRUCTURE IC	The responsibility of control, check and verification of accuracy, correctness, completeness, integration and full compliance of Contract provisions in respect of design analysis and drawing rests with Design & Build Contractor	CHECKED	RAIL INFRASTRUCTURE DEVELOPMENT COMPANY (KARNATAKA) LIMITED	BENGALURU SUBURBAN RAILWAY PROJECT (BSRP)																				
	EDRC-SPECIAL BRIDGES		NAME		K-RIDE CORRIDOR - 2																				
			SIGN		DRAWING TITLE:																				
			DATE		REINFORCEMENT DETAILS OF PILE CAP & PIER FOR DOUBLE DECKER PIER AT P132 TO P137 (GROUP-18)																				
			NAME		DRAWING NO.:																				
			DATE		022077-BSRP-CR2-C-VD-GEN-20-4508																				
			NAME		SCALE: AS SHOWN																				
			DATE		DATE: 26.06.2024																				
			NAME		PRELIMINARY DWG (P), DEFINITIVE DWG (D), CONSTRUCTION DWG (C), AS BUILT DWG (B), SHOP DWG (S), MANUFACTURED DWG (M), SHEET SIZE: A1																				